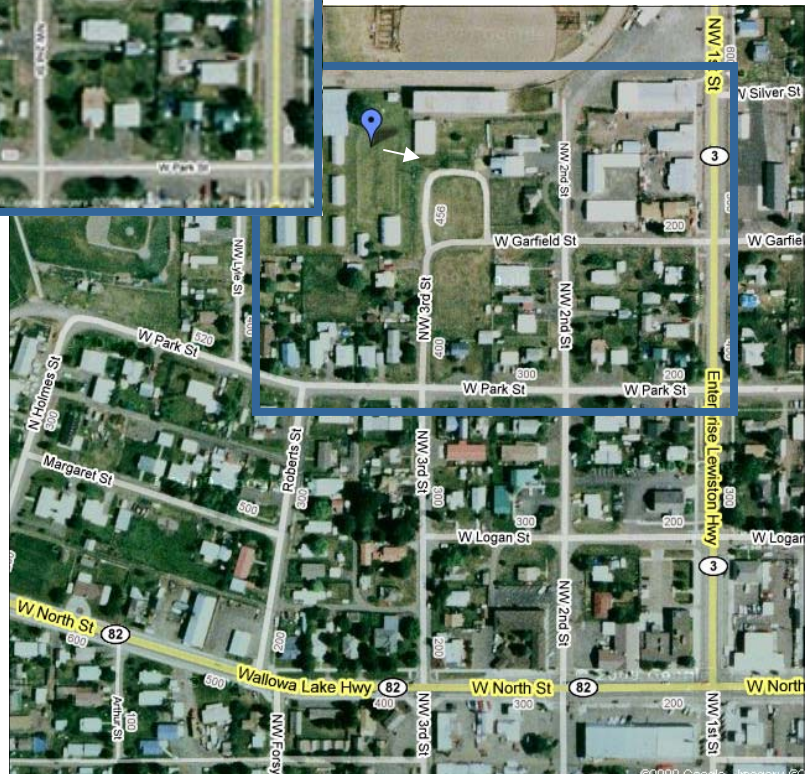




**Map**

If you're driving to Enterprise from the west, on Hwy 82 (like from La Grande) you'll come down the hill into town, past the Safeway and in a few more blocks you'll see a sign that says Hwy. 3 to Lewiston. (There's a Chevron station on your right) You turn LEFT there and go a few more blocks to the Cloverleaf Hall on your left. Go through the parking lot to the Fairgrounds entrance. Someone will be there to check you in. If you're driving into town from the North on Hwy 3 (like from Spokane or Lewiston) watch for the Cloverleaf Hall on your right, just past Les Schwab Tires.



**Driving Times & Distances**

- Seattle, WA - 400 mi. - 7 hours
- Portland, OR- 325 mi. - 6 hours
- Spokane, WA - 200 mi. - 4 1/4 hours
- Boise, ID - 230 mi. - 4 1/4 hours
- Tri-Cities, WA 180 mi. - 3 1/2 hours
- Pendleton, OR 120 mi. - 2 1/2 hours

(See larger map on reverse side.)

[www.juniperjam.com](http://www.juniperjam.com)

Wallowa Valley Music Alliance, PO Box 148, Enterprise, OR 97828 541-426-3390

